

A painting of a garden archway covered in pink and purple flowers, with a large tree in the background.

Litchfield Garden Club Centennial

June 14-15, 2013

Litchfield Garden Club

Member of:
The Garden Club of America
Federated Garden Clubs of Connecticut
National Garden Clubs, Inc.

Presents
A Centennial Gala
1913-2013

Celebrating the Past ~ ~ Toasting the Future

A GCA Flower Show
House and Garden Tour & Boutique
~ Box Lunch ~

June 14 - 15, 2013

Litchfield Community Center
421 Bantam Road, Litchfield, Connecticut

Open to the Public June 15 | Free of Charge

Flower Show and House and Garden Tour
Preview Party June 14, 6:30 – 9:00pm
Tour June 15, 10:00am to 4:00pm
Tour Tickets May Be Purchased In Advance





The purpose of a flower show is threefold: to set standards of artistic and horticultural excellence; to broaden knowledge of horticulture, flower arrangement, conservation, photography and other related areas; and to share the beauty of a show with fellow club members and with the public.

– The Garden Club of America Flower Show and Judging Guide, 2012 Revised Edition



*The purpose of **The Garden Club of America** is to stimulate the knowledge and love of gardening; to share the advantage of association by means of educational meetings, conferences, correspondence and publications; and to restore, improve and protect the quality of the environment through educational programs and action in the fields of conservation and civic improvement.*



*The purpose of **The Litchfield Garden Club** is to educate members and the public in scientific and artistic methods of gardening, stimulate interest in horticulture, encourage and assist in civic beautification, raise environmental awareness and protect and conserve our national and historic heritage.*

TABLE OF CONTENTS

Exhibitors' Timetable.....	3
Flower Show Committee.....	4
GCA Rules.....	5
General Information.....	6
Division I Floral Design Guidelines.....	7
Floral Design Classes.....	8-9
Division II Horticulture Guidelines.....	10
Horticulture Classes.....	11-12
Division III Photography Guidelines.....	13-14
Division III Photography Classes.....	15
Division IV Botanical Arts Guidelines.....	15-16
Botanical Arts Classes.....	17
Division V Conservation and Educational Exhibits.....	17
GCA Flower Show & Club Awards.....	18-19
Map & Directions.....	20
Registration Forms.....	21-24

TIMETABLE FOR EXHIBITORS

Pre-Show

December 14, 2012	Horticulture - Six month ownership deadline
March 14, 2013	Horticulture - Three month ownership deadline
April 1, 2013	Photography registration deadline for Litchfield Garden Club
April 15, 2013	Photography registration deadline for Zone II clubs
May 1, 2013	Photography registration deadline for others
May 1, 2013	Floral Design and Botanical Art registration deadline
May 15, 2013	Photography entry delivery deadline

Show Week/June 13-15, 2013

JUNE 13, 2013

3:30-5:00pm Horticulture entries accepted and passed. All container plants from Litchfield Garden Club entered at this time.

JUNE 14, 2013

8:00-10:30am Floral Design, Horticulture entries accepted and passed at the Community Center.
 9:00-11:00am Floral Design entries at homes accepted and passed
 11:00am Entries close
 11:30am Judges' briefing and lunch
 12:30pm Judging begins
 3:30pm Flower Show evaluation at Community Center
 6:30-9:00pm Preview cocktail party at Community Center

JUNE 15, 2013

9:00-10:00am Refreshing and maintenance of exhibits
 10:00am Show and house tour opens
 4:00pm Show and house tour closes
 4:15-4:30pm Removal of entries

FLOWER SHOW COMMITTEE

Chairman Sylvia Abbott 860-567-8848 jlaska130@sbcglobal.net

Co-Chairmen Michele Bouchard 860-567-5798 michelebouchard02@yahoo.com
Mary Ellen Budny 860-567-0698 mobjfb@sbcglobal.net

Club President Drew Harlow 860-567-0263 hgharlow@snet.net

Centennial Chairmen Jane Hinkel 860-567-8305 pjthink@hotmail.com
Seton O'Reilly 860-567-3243 setonoreilly@sbcglobal.net

Division I & IV Chairmen Michele Bouchard 860-567-5798 michelebouchard02@yahoo.com
Mary Ellen Budny 860-567-0698 mobjfb@sbcglobal.net

Division II Chairman Nancy Post 860-567-8475 npost1126@gmail.com

Division III Chairmen Rose Brooks 860-567-2495 rosebrooks@optonline.net
Cathy Oneglia 860-567-8362 cleso@optonline.net

Division V Chairmen Martha Phillips 860-491-2284 mhphillips@optonline.net
Margaret Miner 860-567-9624 makobe@aol.com

Awards Ronnie Schoelzel 860-567-8518 spots@snet.net

Registration/Entries: Floral Design Martha Phillips 860-491-2284 mhphillips@optonline.net

Registration/Entries: Horticulture Anna Heys 860-361-9353 abheys@optonline.net
Sharon Schildgen 860-283-8001 221swan@gmail.com

Registration/Entries: Photography Rose Brooks 860-567-2495 rosebrooks@optonline.net

Registration/Entries: Botanical Art Michele Bouchard 860-567-5798 michelebouchard02@yahoo.com

Hospitality JoAnna Koster 860-567-5835 JoAnna@KosterKeunen.com
Anita Torizzo 860-485-0809 Atorizzo@charter.net

Judges/Clerks Chairmen Diane Stoner 860-567-5041 dbstoner@optonline.net
Ronnie Schoelzel 860-567-8518 spots@snet.net

Judges' Lunch Joan Burgess 860-567-2270 wabburg@optonline.net
Lynne Sherman 860-567-0677 lynne.sherman@yahoo.com

Preview Party Madeline Patenge 860-567-4171 mpatenge@optonline.net
Jackie Miller 860-491-2734 pjaa@optonline.net

Passing Horticulture Barbara MacDonald 860-567-8620 delph@optonline.net

Publications Art Director Marla Patterson 860-567-9686 boopatt@aol.com

Invitations & Tickets Doreen Tango Hampton 860-567-2706 tangohampton@gmail.com

Historian Lynne Brickley 860-567-0444 brickley1@optonline.net

Publicity Sharon Doty 860-567-3366 shsdoty@hotmail.com

Staging & Properties Sara Gault 860-567-1641 skgault@aol.com
Tonja Curry 860-567-5682 trkc16@aol.com

Boutique Rosalie Furniss 860-672-0034 furniss163@aol.com
Nancy Rath 860-567-8222 nrath007@me.com

Sponsorship Jeannette Ching 860-567-9782 jfching@att.net

Show Treasurers Joan Burgess 860-567-2270 wabburg@optonline.net
JoAnna Koster 860-567-5835 JoAnna@KosterKeunen.com

Box Lunch Susan Jordan 860-567-2093 sjordan@thelawbarn.com

GCA RULES

1. Please carefully read and follow GCA flower show rules, general information and division guidelines. All rules as stated in The Garden Club of America Flower Show and Judging Guide, 2012 Revised Edition, shall apply.
2. All plant material must be correctly identified with the botanical and common names, if possible. Accepted references for nomenclature are AHS A–Z Encyclopedia of Garden Plants, The Plant List at www.theplantlist.org, <http://www.internationalplantnames.com>, Plant Systematics at www.plantsystematic.org.
3. The Garden Club of America expects all exhibitors to be aware of the need to promote conservation of endangered and threatened plants. Plants collected in the wild and listed by the Connecticut Natural Heritage Program may not be exhibited in any flower show sponsored by a GCA club. Cultivated plant material listed by Connecticut's Natural Heritage Program may be exhibited if accompanied by a typed card stating that it has not been collected from the wild and giving information concerning its cultural requirements and methods of propagation. Natural Heritage Program lists will be available before and during the show from the division chairmen and are available online at <http://plants.usda.gov>.
4. Plant material showing evidence of insects or disease must be removed immediately from the exhibition area. This rule will be enforced at any time during the show, whenever the problem is identified.
5. All entries in the floral design and horticulture divisions must include fresh and/or dried plant material. Fresh plant material must be in water or conditioned in such a way as to remain in pristine form while on exhibition. An entry not maintained in show condition may have its award removed. Entries in Photography are not required to include plant material unless stated in the schedule. Entries in Botanical Arts division must be dried plant material or as stated in the class description.
6. Locally invasive plants, diseased plant material, artificial plant material, live animals (including fish), taxidermy, natural birds' nests, and protected sea life, are not permitted. <http://plants.usda.gov>.



GENERAL INFORMATION

1. Entries are open to all GCA club members and other garden club members, including provisionals, and professionals in their disciplines, except as noted in class descriptions.
2. Registration is required for all classes in Floral Design, Photography and Botanical Arts. Registration forms are provided at the back of the schedule. Pre-registration is not required for horticulture classes with the exception of any container greater than 12" and Class 27, Terrace Containers. Classes will be filled in the order registration is received according to postmark/fax/email date and time.
3. While The Garden Club of America, The Litchfield Garden Club, and the Litchfield Community Center and homeowners will exercise due caution in safeguarding exhibits, responsibility for damage, loss or personal injury cannot be assumed.
4. Any clarification or change in the rules, as originally stated in the schedule, shall be communicated promptly in writing by the division chairman to all exhibitors in the class and, at the show, to the judges and to the passing committees.
5. An entry card must accompany each entry. Entry cards will be available at the show and upon request from the entry or division chairmen, in advance of the show. Information required on the entry card must be completed in black waterproof ink or typed on cardstock.
6. The passing committee must pass each entry before an exhibitor may leave the show area. The passing committee reserves the right to refuse any entry that does not conform to the schedule. The exhibitor has the option of correcting the entry, if time permits. If not corrected, the entry cannot be judged, but may remain in place, marked "For Exhibition Only". The judges may not disqualify any entry passed by the passing committee, unless evidence of insect infestation or disease is identified.
7. Once an entry is passed, the exhibitor(s) must immediately leave the exhibition area. A passed entry may not be touched again until after judging and then only to carry out necessary maintenance.
8. Only participating judges and clerks will be allowed on the floor during judging. Flower Show chairmen and division chairmen should be available, but off the show floor at that time.
9. All containers and accessories must be inconspicuously labeled with the exhibitor's name.
10. A novice is an exhibitor who has not won a first place ribbon, or the novice award, in the division entered at a GCA or GCA Major Flower Show. Only an individual novice exhibitor is eligible to receive the Sandra Baylor Novice Award or the GCA Novice Award. A novice exhibitor will be identified by a check mark in the box at the top of the entry card.
11. All exhibits must remain in place and in show condition until fifteen minutes following the show closing time.
12. Statements of Intent are not permitted.

DIVISION I

Floral Design Guidelines

1. Please carefully read and follow the GCA rules, general information and timetable for exhibitors.
2. An exhibitor is permitted only one entry per class, and may enter more than one class. The exhibitor(s) under whose name(s) it has been registered must create and complete the design. All participants must be listed. No more than two exhibitors will be allowed on the floor during the time of entry. Only listed exhibitors and show personnel may be on the show floor at the time of entry.
3. If forced to withdraw, an exhibitor must notify the registration/entry chairman and class consultant, and find a substitute unless there is a waiting list for the class.
4. Mechanics should not be visible unless they are an integral part of the design.
5. At GCA Flower Shows, arrangements may be executed off-site and brought to the show completed.
6. Anything not prohibited in the GCA rules, flower design division guidelines, or individual class descriptions is permitted.
7. The use of cut fruits and vegetables is not allowed. Underwater designs are not allowed in the private homes. All exhibitors working on site are required to work on a waterproof drop cloth.
8. Judging will be based on the principles of design: balance, contrast, dominance, proportion, rhythm and scale; and the elements of design: light, space, line, form, color, texture, pattern and size. Creativity is important, as is distinction, conformance to and interpretation of the class and schedule.
9. Accessories are permitted, unless otherwise stated in the class description.
10. Staging may not be moved in any way. Pedestal tops may be enlarged to 16". All properties will be painted Benjamin Moore Pilgrim Haze 2132-50.
11. Details of private homes' staging will be available from the division chairman after registration form is received. All designs in each class will be staged at one location.
12. Prior to the show, arrangements may be made with the division chairmen for out of town exhibitors who are unable to pick up their entries on Saturday afternoon.
13. Judging criteria will be as listed in the Scale of Points in the GCA FS and Judging Guide 2012 Revised Edition.

DIVISION I

Floral Design Classes

Artistry From The Garden

CLASS 1 / Honoring Mrs. Gage / 4 Entries

In 1913, Mrs. S. Edson Gage gathered a group of nine local, interested women to found the Litchfield Garden Club. The first official meeting took place at the historic Deming house, The Lindens, on North Street. The founding members studied horticulture and enjoyed creating flower arrangements from their gardens. These arrangements depicted the plant's natural beauty, forms, colors, and balance. In 1914, the club initiated its first civic beautification project to landscape the grounds of the railroad station, and in 1915, sponsored its first flower show in conjunction with the Litchfield Grange.

A traditional mass or line mass design for an entryway in a private home, created with all fresh plant material, staged on a grey pedestal 38" high x 16" square. All plant material must be grown and arranged by a single exhibitor. Eligible for the Elizabeth Miller Keith Award. Location: private home. Viewed from three sides.

CLASS 2 / At The Lawn Club / Novice Class / 4 Entries

Many seasonal residents came from New York City, New Haven, and Waterbury to enjoy the cool summer climate of the Litchfield Hills. They, and other local residents, often enjoyed afternoon games of tennis, golf, croquet, or bowling at the Lawn Club. Picnics and boating events were also popular at the Canoe Club on Bantam Lake.

A buffet picnic lunch for four, staged on a round table 36" diameter x 29" high. Committee will provide a floor length green tablecloth. Exhibitor may use an overlay. Location: private home. Viewed from three sides.

CLASS 3 / Victory Gardens / 4 Entries

Members aided in the Home Front efforts during both WW I and WW II by planting 'food' gardens, preserving produce, distributing war recipes, sponsoring school children's gardens, and selling fruits and vegetables. The garden club sponsored the local Canning Center, in cooperation with the Grange, paid to train the demonstrators and had members join in the canning effort.

A design incorporating fruits and/or vegetables, staged on a kitchen countertop. Design may not exceed 20" in width or depth, unlimited height. Location: private home. Viewed on all sides.

CLASS 4 / Toasting the Future / 4 Entries

Looking to the future, conservation of our natural and man-made environment, both local and nationwide, will continue to be a focus of the club's work. Educating members and the public remains a commitment, as well as continuing with civic projects important to the town and working with other organizations for the benefit of the community.

A functional contemporary cocktail tray for two staged on a TV tray/ table 18 ½" wide x 15 ½" deep x 26" high. Exhibitor to provide tray and all components, including a floral design. Location: Private home. Viewed from three sides.

CLASS 5 / Wireless / 4 Entries

Keeping in mind the resource waste that occurs with paper use, the club is now utilizing cyberspace and the internet for communication and research. LGC's affiliation with our two national parent organizations, The Garden Club of America, joined in 1915, and the National Garden Clubs, Inc., joined in 1937, keeps us in communication with other clubs and their members, sharing interests and activities important to today's world.

A hanging design, suspended in a grey frame 32" wide x 48" high placed on a table 29" high. Location: Litchfield Community Center/or private home. Viewed from the front.

CLASS 6 / Double Take / 4 Entries

The art of floral design complements the magic of the digital camera. Photography has become a newer artistic endeavor as another means to explore and capture the beauty of our environment.

A design inspired by an accompanying photograph of a feature in a private or public garden or park, staged on a grey pedestal 38" high x 14" square. Feature may be a statue, sculpture, natural or man-made, but should be a focal point in its location. Photograph may be taken by the floral design exhibitor or another photography exhibitor. Design will be judged in the Floral Design Division. Photograph will be judged in the Photography Division. Photograph will be staged on an easel next to the design. Location: Litchfield Community Center. Viewed from the front. (See Photography Division Class 1)

CLASS 7 / Timeless Projects

Component Challenge Class / Open to Guests / 4 entries

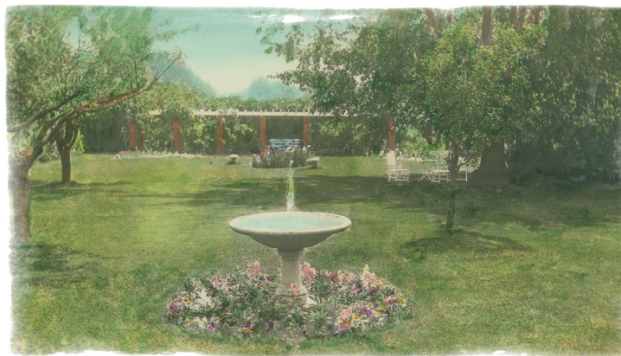
Members work hard to encourage positive activities to recycle and reduce waste. Many articles can serve multiple purposes when reused in a different manner.

A design which incorporates 5 of 7 components provided by the committee, staged on a grey pedestal 28" high x 16" square. Exhibitors may change the components in any manner, but five must be visible in the design. Other components may be added to the design. Exhibitor to provide plant material. Viewed from three sides.

CLASS 8 / Congratulations Litchfield Garden Club! / 3 entries

Judges Invitational Class - not for competition





DIVISION II

Horticulture Guidelines

1. Please carefully read and follow the GCA rules, general information and timetable for exhibitors.
2. Entries must have been owned and grown by the exhibitor for a minimum of three months, unless otherwise stated in the schedule. Entries eligible for the Catherine Beattie Medal and/or the Clarissa Willemsen Horticulture Propagation Award must have been in the possession of the exhibitor for at least six months and will be identified by a check mark at the top of the entry card in the appropriate box. Entries in the Par Class must have been owned and grown by exhibitor for a minimum of six months.
3. An exhibitor may submit any number of entries per class, provided each is a different species or cultivar. Exception: Class 4 Hosta. Only one named hosta entry per exhibitor will be accepted in Classes 4 a, b, c, d. In Class 30, the delphinium challenge class, unlimited entries per exhibitor are permitted.
4. All entries propagated by the exhibitor must be so identified with the method and relevant date(s) of propagation on the entry card.
5. Staking, if used, must be inconspicuous. A compatible saucer must accompany entries.
6. Classes may be subdivided and entries moved and/or reclassified at the discretion of the horticulture committee and/or the judges.
7. Containers are measured at the diameter or the diagonal of the inside rim.
8. One key card (diagram or plant list) is required when multiple species or cultivars are exhibited in the same container. Key card must be a 4" x 6", white, unlined card or an identifying photograph.
9. Container-grown plants should be exhibited in containers that are clean, unobtrusive and compatible with the exhibit. Terracotta clay pots are preferred. Other options include stone-like (Hypertufa), green or terracotta colored plastic pots, bonsai containers, wire baskets, slatted orchid baskets and plants mounted on driftwood. Double potting is not permitted.
10. The committee will provide containers and wedging materials for all cut specimens.
11. Judging criteria in all respective classes will be as listed in the GCA Flower Show and Judging Guide, 2012 Revised Edition.

DIVISION II
Horticulture Classes
Pride of Our Gardens

I. OUTDOOR GARDENING: Cut Specimens (Classes 1 – 25)

One stem, spike or spray except for collections. Any foliage must be attached to the stem.

Classes 1- 6 Perennials and Biennials

1. *Digitalis*
2. *Paeonia* - One bloom, disbudded
 - a. Single
 - b. Semi Double
 - c. Double
3. *Astilbe*
4. *Hosta* - All hostas must be named varieties. Exhibitors limited to one entry per class.
 - a. Blue
 - b. Yellow
 - c. Variegated
 - d. Miniature
5. Collection of five different blooming perennials shown in single container. Key card required.
6. Other
 - a. Blooming
 - b. Foliage

Classes 7-13 Roses

7. Species Roses
8. Old Garden Roses (existing prior to 1867)
Modern Roses
9. Hybrid Teas
10. Floribunda and Grandiflora
11. Climbing and Shrub roses
12. David Austin roses
13. Other

Classes 14-18 Bulbs, Corms, Rhizomes and Tubers

14. *Allium*
15. *Lillium*
16. *Iris siberica*
17. *Iris Germanica*
18. Other

Classes 19-25 Trees, Shrubs and Vines not to exceed 30" in length from tip to tip. Any foliage must be attached to the stem.

19. Flowering trees grown for flowers. Must be in bloom.
20. Trees grown for foliage.
21. Flowering shrubs grown for flowers. Must be in bloom.
22. Shrubs grown for foliage.
23. *Clematis*
24. Other vines grown for flowers, must be in bloom.
25. Vines grown for foliage.

II. CONTAINER GARDENING (Class 26)

26. Trained Plants
 - a. Standard
 - b. Trained on a Frame
 - c. Other

III. SPECIALTIES OF THE HOUSE (Classes 27-29)

27. **Terrace Containers.** Open only to novice LGC members. Up to 8 entries. Collection of three or more culturally compatible species or cultivars in a window box supplied by the committee. Some herbs and/or vegetables must be included. Plant material must be in exhibitor's possession for 6 weeks or more. Key card or diagram required. Judged as follows:

Compatibility or suitability of plant material	40
Design and arrangement	30
Condition/cultural perfection	15
Color	10
Labeling	5
Total	100

28. **Heritage Plants** - plants grown by exhibitor for more than five years. Plants exceeding 12" in diameter must pre-register.
29. **Generations** - A plant propagated by the exhibitor accompanied by the parent plant from which it was propagated, each in a separate, compatible container. Propagation method and relevant information is required on the key card. Judged as a single entry.

IV. CHALLENGE CLASSES (CLASSES 30-32)

Open to Litchfield Garden Club members only. A card describing all relevant propagation information must accompany the entry.

30. A cut specimen of *delphinium elatum* 'Royal Aspirations'-grown from seed from Dowdeswell Delphiniums in New Zealand by the exhibitor. Seeds were planted in January 2012 and grown outdoors in garden conditions. Open only to LGC members attending the workshop. No entry size limit. Unlimited entries per exhibitor.
31. *Arctotis venusta Grandis* - Blue Eyed African Daisy - grown from seeding distributed to and grown by LGC members in 2013. Container-grown plant displayed in appropriate sized container with saucer. One entry per exhibitor.
32. Shrub grown from cutting taken at summer 2012 workshop. One entry per exhibitor.
 - a. Rose
 - b. Weigela

V. PAR CLASS

33. An exhibit of exceptional horticultural merit, which does not qualify for entry elsewhere in the Horticulture Division. Entries in the Par classes must have been owned and grown by the exhibitor for a minimum of 6 months. Cut specimens, hanging baskets and bonsai are not permitted. Orchids are permitted.

DIVISION III

Photography Guidelines

1. Please carefully read and follow the GCA rules, general information and the timetable for exhibitors.
2. Exhibitors are allowed one entry in this division. Total entries for the show are limited to 20 photographs. Advance registration is required by May 1, 2013. Exhibitors will be notified if accepted or not, at the time of registration. If forced to withdraw, an exhibitor must contact the division registration chairman and find a substitute unless there is a waiting list for the class
3. Photographs that have won first place or a special award in a GCA or GCA Major Flower Show may not be entered in competition again. A photograph that was previously entered and did not place first, may be entered again if the image is altered and newly printed. The same photograph may only be entered in one show at a time.
4. Each photograph must be the work of the exhibitor, under whose name it is registered. Matting, mounting and printing may be done professionally.
5. Any manipulation at any stage must be the work of the exhibitor. This includes enhancement for color or clarity, removal of a part of the image, combining images, or distorting the original subject.
6. Photography entries are limited to subjects consistent with Garden Club of America interests such as horticulture, floral design, gardens/landscapes, conservation/the environment, historic preservation, civic improvement and the natural world
7. Photographs must be mounted on black mat board. The overall dimension must not exceed 50". The surface finish of the photograph is the choice of the exhibitor. Glass and framing are not permitted.
8. Color, monochrome and creative techniques (obviously manipulated; non traditional) photographs are in separate classes.
9. Each entry must be labeled on the back of the photograph mounting with the exhibitor's name, garden club, zone, address, phone number and class entered. The top of the photograph must be indicated.
10. Identification of plant material on the entry card is not required, but encouraged whenever possible.
11. A title, of no more than 10 words, may be included on the entry card.
12. Background color is a neutral beige.
13. Photographs must be received no later than May 15, 2013. Send photographs to Rose Brooks, 42 East Chestnut Hill Road, Litchfield CT 06759, telephone 860-567-2495. Registration will be confirmed and receipt of the photograph will be acknowledged by email. For information, contact Rose Brooks at the above address or at rosebrooks@optonline.net.

14. If a photograph entry is to be returned, the exhibitor must provide a self-addressed return label, envelope, postage and packing material. Any award received will be noted on the back of the mount before it is returned.
15. All photographs will be passed by the photography committee to verify that class specifications have been met. If a photograph is not passed, the exhibitor will be notified and allowed, if time permits, to send a replacement photograph.
16. Only the photography committee may reclassify an entry, but only with the permission of the exhibitor. The photography committee and the judges may subdivide a class.
17. Only one first, one second, one third and as many honorable mentions as are merited are allowed in each class.
18. A follow-up letter or email will be sent to all photography exhibitors listing the results of the Photography Division.
19. The following Scale of Points will be used for judging:

Creativity	25
Composition	25
Technical Skill	20
Conformance/Interpretation	20
Distinction	10
Total	100



DIVISION III
Photography Classes
The Garden Through A Lens

Class 1. Double Feature / Color / 4 Entries

An image of a feature in a private garden or public space. Feature may be a statue, sculpture, natural or man-made but should be a focal point in its location. Photograph will accompany and be staged next to a design in the Floral Design Division, Class 6. Double Feature, and be the inspiration for the floral design. Photograph will be judged in the Photography Division, Floral Design will be judged in the Floral Design Division.

Class 2. Roots to Canopy / Monochrome / 4 Entries

An image of a tree or part of a tree.

Class 3. Focus on Flower or Foliage / Color / 4 Entries

A macro or a close up of a blossom or leaf.

Class 4. The Power of Pollinators / Color / 4 Entries

An image of a pollinator.

Class 5. Abstracting the Real / Creative Techniques / 4 Entries

Diptych. Two images, one original and one manipulation of the original, mounted as a single unit.

DIVISION IV
Botanical Arts Guidelines

1. Please carefully read and follow the GCA rules, general information and the timetable for exhibitors.
2. Registration forms must be mailed to the division registration chairman by May 1, 2013, and will be accepted in the order postmarked. Entrants must enclose a self-addressed, stamped post card to be notified of their inclusion in classes, or will be notified by email.
3. Exhibitors are permitted only one exhibit in each class, but may enter more than one class. All participants must be listed on the entry card. Entries may be personally delivered to the show during entry hours on Friday, June 14, or sent in the mail.
4. If forced to withdraw, the exhibitor must notify the division chairman and the class consultant, and find a substitute unless there is a waiting list for the class.
5. All plant material used must be dried - this includes flowers, foliage, seeds, pods, nuts (in or out of shells), vegetables, twigs, vines, reeds, etc. Only plant material, mechanics and their surface treatments (i.e. paints, nail polishes, varnishes, waxes, etc.) are permitted. Glitter (i.e. shake-on or incorporated into paints) and artificial, endangered, and locally invasive plant material may not be used.
6. Wood or processed plant material may not be carved into figural forms; such forms must be assembled. Any plant material may be cut, incised or shaped to enhance artistic effect.

7. Non-plant material (i.e. cardboard, metal, twine, string, cording, etc.) may be used only for construction and must not show.
8. Processed products may not be included in design, i.e. couscous, tapioca, balsa wood, ground cinnamon, ground coffee or ground pepper, etc.
9. Botanical couture entries in Division IV must be created from all dried plant material.
10. A sample card must accompany each entry. An untreated sample of each plant material used in the design, correctly identified with botanical and common names, must be affixed to a 4" x 6" white, unlined card.
11. All mailed entries must be received no later than June 1, 2013. Send entries to Michele Bouchard, PO Box 1855, Litchfield CT 06759. For information contact Michele Bouchard, 860-567-5798, email: michelebouchard02@yahoo.com. If an exhibit is to be returned by mail, the exhibitor must provide a self-addressed return label, return postage and packing material. Entries may be hand delivered during entry hours on Friday, June 14.
12. If an entry has won first place, or the novice award, in a GCA or GCA Major Flower Show, it may not be entered in competition again. An exhibit, which has been previously entered and did not place first, may be entered again if the piece is significantly altered.
13. All entries will be passed by the Botanical Arts committee to verify class specifications have been met. If time permits, an entry may be returned for correction.
14. The committee will be responsible for installation of the exhibits. Each exhibit will be handled with the utmost care. Indicate in writing, and include with the exhibit, any special instructions for handling and display.
15. Scale of points by which the classes are to be judged:

Design	35	
Craftsmanship	30	
Originality	15	
Interpretation of theme	10	
Distinction		<u>10</u>
Total	100	



BOTANICAL ARTS

Botanical Arts Classes

Party Favorites

Class 1. Roaring Twenties / 4 Entries

A headband for a dancing party, created from all dried plant material, staged on a Styrofoam mannequin head placed at approximately 40" in height. Head form will be provided by committee upon registration. Viewed from the front.

Class 2. Dinner Party Gems / 4 Entries

A brooch appropriate for an Art Deco era dinner party, created of all dried plant material, staged on a black velvet square 6" x 6". Staging will be sent to exhibitor on registration.

DIVISION V

Conservation and Educational Exhibits

I. Litchfield's Local Seasonal Foods

The Conservation Committee will show the many reasons why diets should include as much local seasonal food as possible, including supporting local growers and food preparers in order to sustain the agricultural base of the community, thereby reducing energy/transportation usage. It will provide information as to where and when local seasonal foods are sold and utilized commercially in the area.

II. Cultivating A Century Of Inspiration

This exhibit will highlight the Litchfield Garden Club's varied activities since 1913, with a focus on the club's numerous contributions to the community. Images, objects, printed and manuscript materials from the club's extensive archives will be presented. The exhibit will focus on the club's civic projects, educational programs, contributions to local conservation and environmental work and enduring partnerships with other community organizations. Glimpses of the outstanding achievements of several notable members will be illustrated and awards and citations from past flower shows will be exhibited. There will be a Centennial Garden History and Design video playing continuously as well as binders with more in-depth information. The goal of the exhibit is to educate both visitors and club members on the accomplishments of the past and to inspire future projects.





GCA FLOWER SHOW AWARDS

GCA Flower Show Awards described below have been applied for and will be presented if merited.

Division I, Floral Design

The **Harriet DeWaele Puckett Creativity Award** may be awarded to members of GCA clubs or non-members in recognition of a uniquely skillful and creative response to an imaginative schedule. It will be given for an innovative and interpretive entry, which, although it abides by the principles of good design, goes beyond traditional period arrangement to whatever art form the arranger(s) chooses. The arrangement must have placed first, second, or third in the Flower Arrangement Division of a GCA Flower Show. An entry in any challenge class is not eligible to receive this award. The award is not a substitute for Best in Show and will be given at the discretion of the judges.

The **Dorothy Vietor Munger Award** may be awarded to members of Garden Club of America clubs in competitive flower arrangement classes at a GCA Flower Show. It is offered in recognition of creative work of outstanding beauty using predominantly fresh plant material. The arrangement must have placed first, second, or third. Challenge class entries are not eligible. The award is not a substitute for Best in Show and will be given at the discretion of the judges.

The **Sandra Baylor Novice Award** may be given at a GCA and a GCA Major Flower Show to an exhibitor who is a member of a GCA club and who has never won first place, or this award in the Flower Arrangement Division of a GCA or a GCA Major Flower Show. It shall be awarded to an individual novice exhibitor for a unique and skillful response to the schedule. Novice entries placing first, second, or third in any competitive class, including challenge classes, are eligible for this award.

Division II, Horticulture

The **Catherine Beattie Medal** is to be awarded for a horticulture entry distinguished by its vibrancy, prime condition, and perfection of grooming. It must have been grown by the exhibitor for at least six months. The medal may be awarded for a single plant, collection of plants, container garden, or cut specimen, but only if there is an exhibit worthy of the honor. It may be awarded to members of GCA clubs only; individual, joint, and club entries are eligible. The award should not be considered as a substitute for Best in Show. The medal may not be awarded to the same exhibit more than once; however, offspring of a Beattie winner are eligible to receive the award.

The **Clarissa Willemsen Horticulture Propagation Award** is to be awarded for a horticulture entry distinguished by its prime condition, flawless grooming and difficulty of propagation. The entry must have been propagated and grown by the exhibitor for at least six months. The Horticulture Propagation Award may be given for a single rooted plant or a collection of rooted plants. The dates and method of propagation must be recorded on the entry card. The entry must have placed first, second, or third at a GCA Flower Show. The award may not be given to an exhibit more than once.

The **Rosie Jones Horticulture Award** may be presented to a horticulture entry of exceptional visual appeal that reflects the spirit of growing with joy and enthusiasm and inspires others to propagate, grow, show and share horticulture. An exhibit that has been propagated by the exhibitor will be given special consideration but propagation is not a requirement. Perfection, while always desirable, is not a primary criterion. This award celebrates the ineffable joy inherent in the beauty and pursuit of horticulture. It could be the entry that would win the popular vote but not necessarily the Beattie or the blue ribbon. Its primary virtue shall be its exceptional and exuberant inspiration.

Division III, Photography

The **Photography Creativity Award** may be given to a member of a GCA club in recognition of creative and technical excellence in response to the theme of the schedule. The entry must have placed first, second, or third.

Division II and III, Horticulture and Photography

The **GCA Novice Award** may be given at a GCA and a GCA Major Flower Show in the **Horticulture, Photography and Botanical Arts** to an exhibitor who is a member of a GCA club and who has never won first place or this award in the division entered, of a GCA or a GCA Major Flower Show. It shall be awarded to an individual novice exhibitor for an outstanding exhibit. Novice entries placing first, second, or third are eligible for this award.

Division V, Conservation and Educational Exhibits

The **Ann Lyon Crammond Award** may be presented at a GCA or GCA Major Flower Show to an outstanding educational exhibit, which best educates the public about gardens. Any educational exhibit which increases the appreciation of any aspect of plants, gardens, or landscape design, may be considered for this award. The award may be given to GCA club members, member clubs, non-members or other organizations.

The **Marion Thompson Fuller Brown Conservation Award** may be presented for an outstanding conservation exhibit at a GCA Flower Show. The award recognizes an exhibit of exceptional educational and visual merit, which increases knowledge and awareness of the environment. The exhibit should emphasize environmental concerns and may demonstrate conservation practices. Plant material may or may not be used and, when appropriate, must be clearly identified. Protected material may be included if such materials are identified as protected and not collected in the wild. The award may be given to Garden Club of America clubs, club members, non-members or other organizations. Exhibits may be judged as a par class or in competition with other entries.

Overall

Best in Show, selected from among the first place winners, may be awarded in each division.

Judges' Commendation(s) may be given to an entry, class, section, special exhibit or other aspect of the show that is of exceptional merit.

Award of Appreciation may be given by the judges to a conservation or education exhibit thanking the exhibitor or group for participation. The award may also be given to non-judged classes.

SPONSORING CLUB AWARDS

Elizabeth Miller Keith Flower Arrangement Award - is a Zone II Award honoring Elizabeth Miller Keith, a longtime Washington Garden Club member, for an outstanding flower arrangement of fresh and/or dried plant material in any style chosen by the individual club, be it miniature, mass, freestyle, etc. with the requirement that the plant material must predominate. The plant material must have been grown and arranged by one exhibitor whose name appears on the entry card. A special class in the floral design division of the show must be included in the schedule limited to exhibits competing for this award.

FLOWER SHOW MAP

- The Litchfield Community Center - 421 Bantam Road (Tickets & Restrooms)

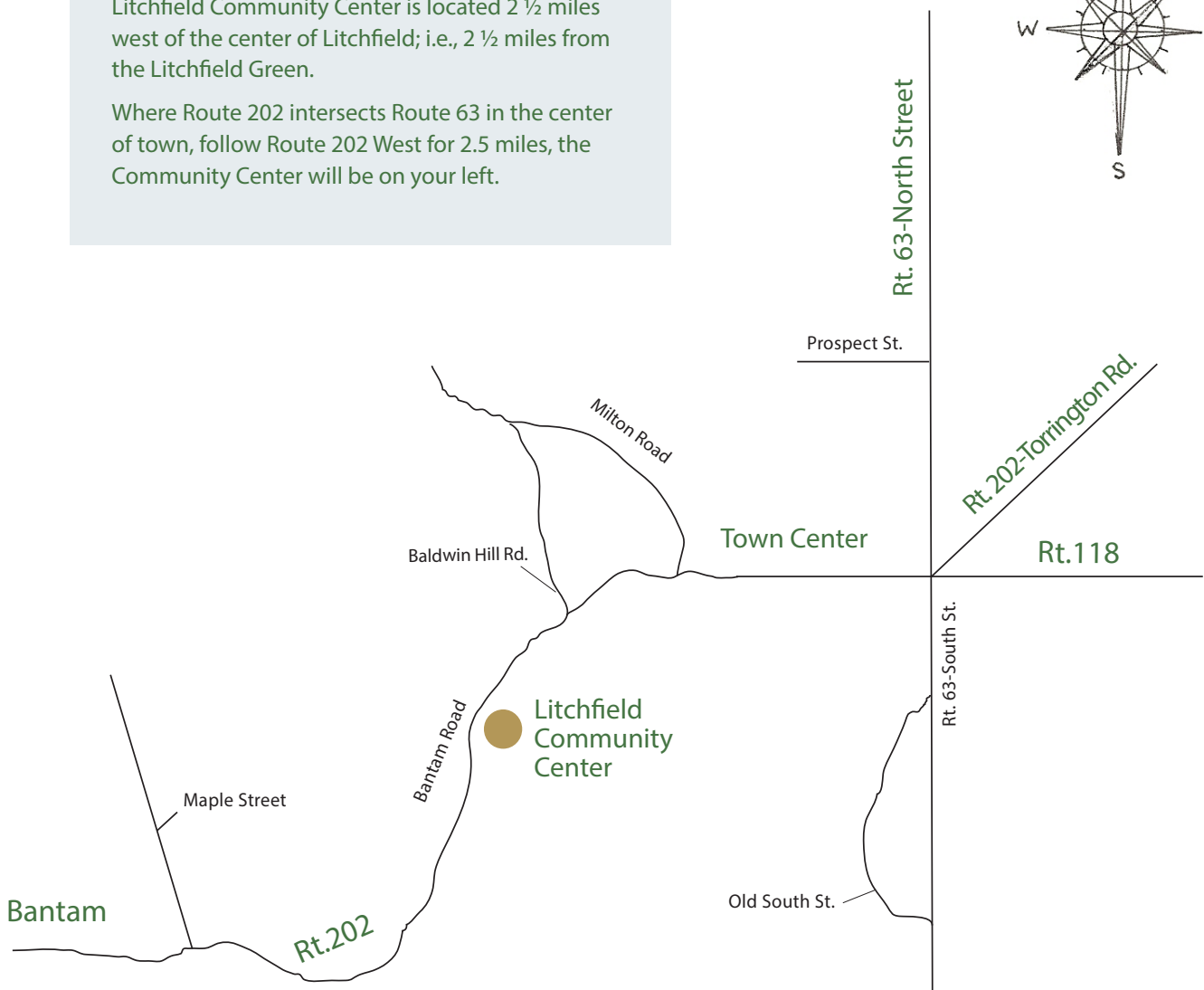
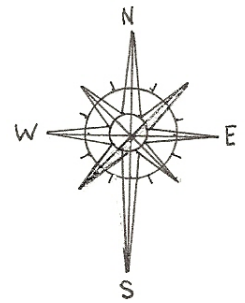
The Flower Show is being held at:

The Litchfield Community Center
421 Bantam Road (Route 202)
Litchfield, CT 06759

DIRECTIONS:

Litchfield Community Center is located 2 ½ miles west of the center of Litchfield; i.e., 2 ½ miles from the Litchfield Green.

Where Route 202 intersects Route 63 in the center of town, follow Route 202 West for 2.5 miles, the Community Center will be on your left.



Celebrating the Past Toasting the Future

Division I Floral Design Registration Form

Please complete one Registration Form per entry.
Registration Deadline May 1, 2013.
Please print using block letters.

Send to: Martha Phillips, PO Box 458, Litchfield CT 06759
Telephone: 860-491-2284; email: mhphillips@optonline.net

Name: _____ Garden Club/Zone _____

Address: _____

Tel: _____ Fax: _____ E-mail _____

Co-Exhibitor(s) _____

Class Number Class Title

1st Choice _____

2nd Choice _____

Novice Exhibitor? Yes or No _____ Date: _____

Celebrating the Past Toasting the Future

Division II Horticulture Registration Form

Registration is not required for horticulture entries but would be appreciated.
Exception: containers over 12" in diameter.

Please complete one Registration Form per entry.
Registration Deadline May 1, 2013.
Please print using block letters.

Send to: Anna Heys PO Box 576, Litchfield, CT 06759
Telephone: 860-361-9353; Email: abheys@optonline.net

Name: _____ Garden Club/Zone _____

Address: _____

Tel: _____ Fax: _____

E-mail _____

Class Number

Class Title

Novice Exhibitor? Yes or No _____ Date: _____

Celebrating the Past Toasting the Future

Division III Photography Registration Form

Please complete one Registration Form per entry. Registration Deadline May 1, 2013.
Please print using block letters.

Send to: Rose Brooks, 42 East Chestnut Hill Road, Litchfield CT 06759
Telephone: 860-567-2495; Email: rosebrooks@optonline.net

Name: _____ Garden Club/Zone _____

Address: _____

Tel: _____ Fax: _____

E-mail _____

Class Number Class Title

1st Choice _____

2nd Choice _____

Novice Exhibitor? Yes or No _____ Date: _____

..... CUT

Celebrating the Past Toasting the Future

▲ TOP ▲

Photograph Entry Form

▲ TOP ▲

Photograph Entry Deadline: May 1, 2013

Please complete one Entry Form per exhibit. Affix the form to the back of the mounting.

Send photograph to: Rose Brooks, 42 East Chestnut Hill Road, Litchfield, CT 06759

Class Entered: _____

Name: _____ Garden Club/Zone _____

Address: _____

Tel: _____ Return postage and packing must have been provided.

Optional: Identifiable Plant Material _____

Optional: Title or brief statement _____

Novice?: Yes No Award Won: _____

Celebrating the Past Toasting the Future

Division IV Botanical Jewelry Registration Form

Please complete one Registration Form per entry.
Registration Deadline May 1, 2013.
Please print using block letters.

Send to: Michele Bouchard, PO Box 1855, Litchfield, CT. 06759
Telephone: 860-567-5798; email: michelebouchard02@yahoo.com

Name: _____ Garden Club/Zone _____

Address: _____

Tel: _____ Fax: _____

E-mail _____

Class Number ClassTitle

1stChoice _____

2ndChoice _____

Novice Exhibitor? Yes or No _____ Date: _____