



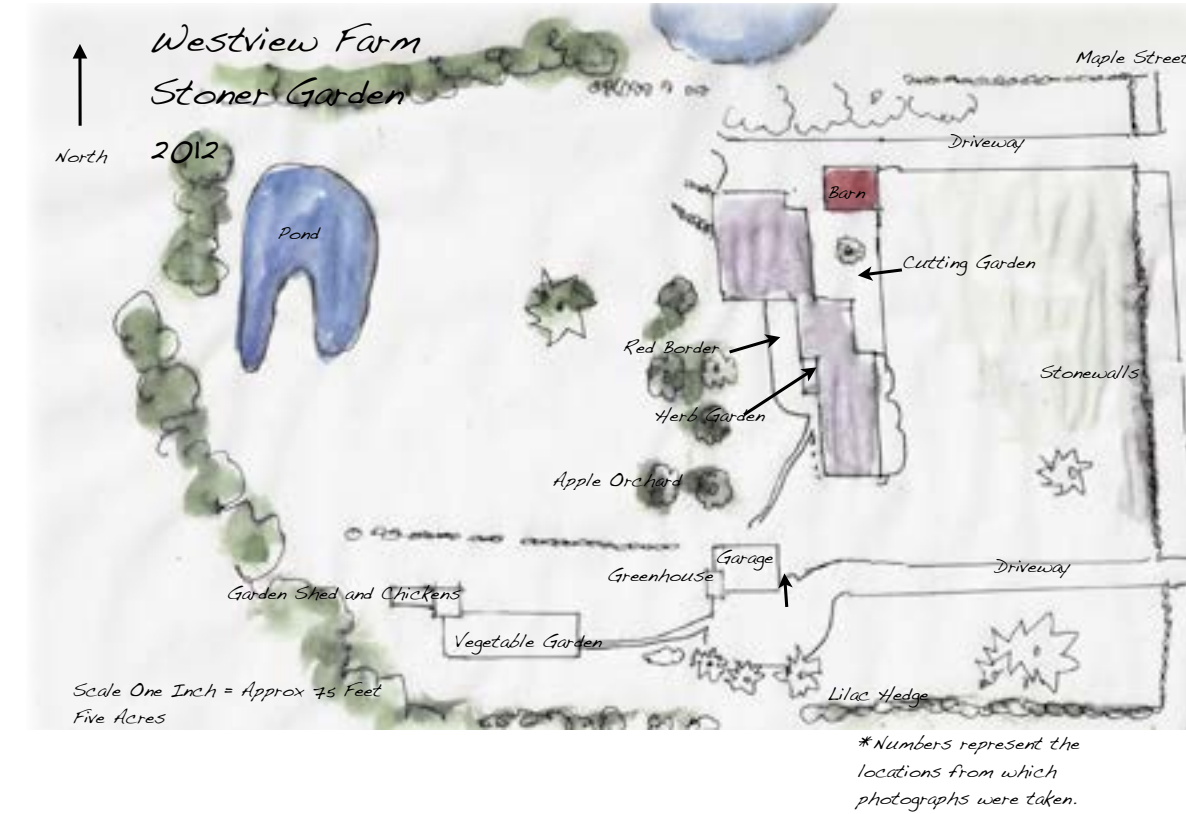
Chestnut Hill Garden's 240-foot perennial border. Photo: *Bronwyn Schoelzel*



**Litchfield's Breeze Hill Farm, South Garden** in 2012. The grounds are characterized by expansive turf lawns to the west, north and east, with a manicured formal garden and greenhouse to the south. A production garden slightly removed from the main house focuses on ornamental and vegetable plants for stock, and propagation of old specimen trees and seeds from the estate grounds.



Garden plan detail from Breeze Hill Farm, 2012 Smithsonian documentation of the South Garden. Plan graphic: *Jameson Secco*  
Photo left: *Dale Ryan*



**Litchfield's Westview Farm**, accepted to the AAG in 2012.  
Left: A hand drawn garden plan of the entire farm by the artist owner.  
Left below: A period arch with climbing roses leads the eye toward the garden beds surrounding the antique farmhouse.  
Right above: A birds eye view of the cutting garden from upstairs.  
Right below: The cutting garden and barn from above in winter.  
Photos & Drawing: *Diane B. Stoner*



Breeze Hill Farm, South Garden, circa 1920s.  
*Original glass slide, courtesy of The Helga J. Ingraham Memorial Library, Litchfield Historical Society.*



**Chestnut Hill Gardens** were documented for the AAG in 2011. Over the past 30 years, the owners have expanded an 80-foot perennial border to 240 feet. Native plants, a large vegetable and herb garden, a water garden, pinetum, fruit trees, a native shrub border, and a nine-acre meadow surround the owner-designed solar house.  
Left: A tapestry of Rhododendron  
Below: A bird's eye view of Chestnut Hill Gardens  
Photos: *Bronwyn Schoelzel*



**The Curtis Hatheway House**, built in 1899, was accepted by the Smithsonian in 2011. During the AAG documentation, the owners were able to reunite original photos (above) of the family in the garden from the early 1900s with current landscape design development. An allée of *Pyrus* "Chanticleer" graces the front walk.  
Photos right above/below: *Marla J. Patterson*



# Litchfield Garden Club's Garden History & Design Committee

1915 ~ 2013

## Historic Garden Documentation

### 1915:

LGC President, Margaret Hicks Gage, initiates the Garden Club of America "lantern slide" project, currently part of the Smithsonian Institution's Archives of American Gardens.

### 1920 - 1980s:

The nucleus of the GCA collection is composed of nearly 3,000 slides/60,000 photographic images from the 1920s and later. LGC has 35mm transparency slides produced of Litchfield historic gardens and properties; copies are provided for the Smithsonian. LGC's original glass slides are archived with the Litchfield Historical Society.

### 1960s - 1980s:

Litchfield Garden Club members' gardens are reunited with antique glass slides; old relationships within the historic gardens, properties and families are documented and archived by LGC.

### 2009 - 2013:

In preparation for the LGC Centennial, the Garden History & Design Committee's work escalates. Five members' properties are formally documented and accepted into the Smithsonian's Archives of American Gardens.



Garden graphic: Katherine G. Witherspoon & Thomas W. Witherspoon, Jr.

The Lily Pool at the Baby Boomer Retirement Garden. Photo right: Thomas W. Witherspoon, Jr.



# Historic Garden Documentation



[Exhibit photos are reprinted courtesy of The Smithsonian Institution, Archives of American Gardens, Garden Club of America Collection.]



Photo: Thomas W. Witherspoon, Jr.



Photo: Elaine G. Witherspoon

## The Baby Boomer Retirement Garden

One of five Litchfield Garden Club members' gardens accepted into the Smithsonian's Archives of American Gardens in recent years ~Photographing contrasting seasonal displays, shown in the two photos above, is a key element in a successful garden documentation.